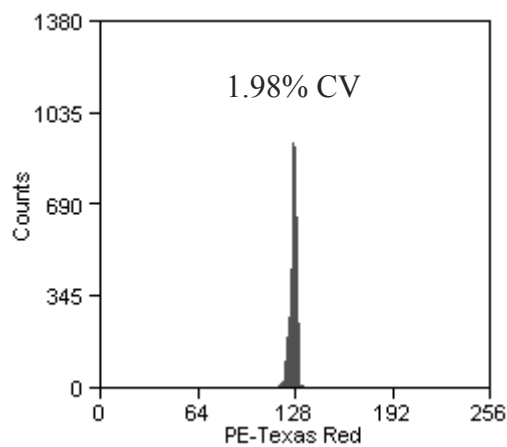
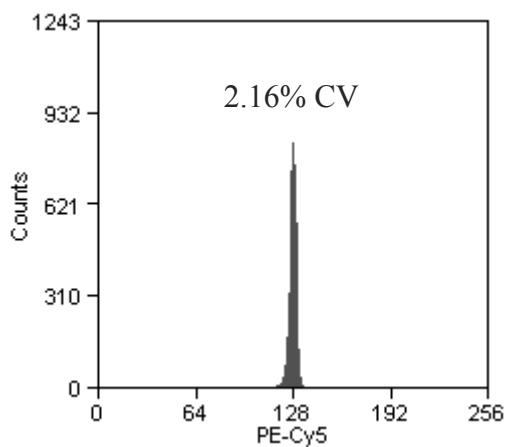
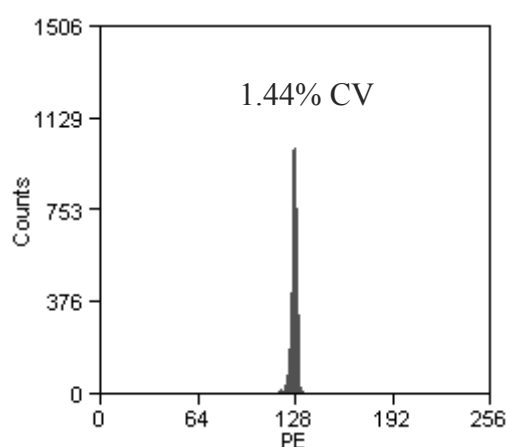
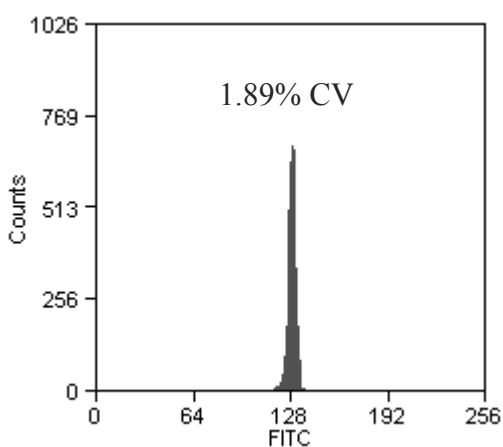


## SPHERO™ Fluorescent Alignment Particles

The Fluorescent Alignment Particles contain a single peak with very small fluorescence and size CV, they are very useful in the alignment of the optical system of flow cytometers with only a 488nm laser.

Particle Type and Surface	Size, $\mu\text{m}$	Catalog No.	Unit
Fluorescent Alignment Particles, $10^8/\text{mL}$	3.0-3.4	FAP-3056-5	5 mL

### Histograms of FAP-3056-5



NOTE: %CV is dependent on the flow rate, concentration, and the instrument used to evaluate the Fluorescent Alignment Particles.