

## Spherotech, Inc.

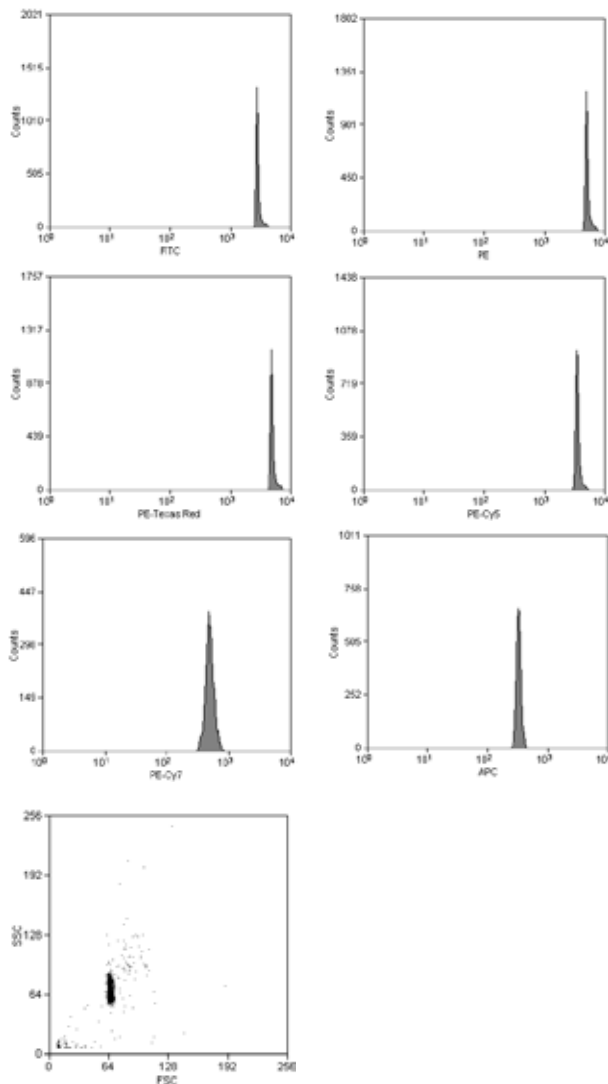
27845 Irma Lee Circle, Unit 101, Lake Forest, IL 60045

### SPHERO™ AccuCount Particles

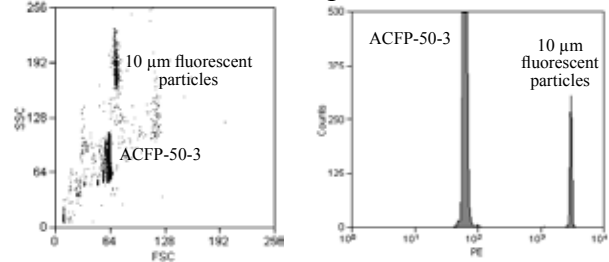
The SPHERO™ AccuCount Particles are designed to be used as reference particles with known number of particles per mL for counting the absolute cell number by flow cytometry. The SPHERO™ AccuCount Particles are very easy to use and are cost effective. The AccuCount Fluorescent Particles are fluorescent in FITC, PE and PE-Cy5 channel. Both AccuCount Fluorescent and AccuCount Blank (nonfluorescent) Particles are available in 5, 7 and 10 μm particle size to accommodate the size of the cells to be counted. In addition, Spherotech also manufactures the AccuCount Rainbow Fluorescent Particles and AccuCount Ultra Rainbow Fluorescent Particles for detection in more fluorescent channels.

Particle Type and Surface	Size, μm	Catalog No.	Unit
AccuCount Blank, 10 <sup>6</sup> /mL	2.0-2.4	ACBP-20-10	10 mL
AccuCount Blank, 10 <sup>6</sup> /mL	5.0-5.9	ACBP-50-10	10 mL
AccuCount Blank, 10 <sup>6</sup> /mL	7.0-7.9	ACBP-70-10	10 mL
AccuCount Blank, 10 <sup>6</sup> /mL	8.0-12.9	ACBP-100-10	10 mL
AccuCount Fluorescent, 10 <sup>6</sup> /mL	5.0-5.9	ACFP-50-5	5 mL
AccuCount Fluorescent, 10 <sup>6</sup> /mL	7.0-7.9	ACFP-70-5	5 mL
AccuCount Fluorescent, 10 <sup>6</sup> /mL	7.0-7.9	ACFP-70-10	10 mL
AccuCount Fluorescent, 10 <sup>6</sup> /mL	8.0-12.9	ACFP-100-10	3 mL
AccuCount Rainbow Fluorescent, 10 <sup>6</sup> /mL	8.0-12.9	ACRFP-100-3	3 mL
AccuCount Ultra Rainbow Fluorescent, 10 <sup>6</sup> /mL	5.0-5.9	ACURFP-50-10	10 mL
AccuCount Fluorescent Particle Kit. Contains 4 bottles: 0.5x10 <sup>6</sup> /mL, 1.0x10 <sup>6</sup> /mL, 0.5x10 <sup>7</sup> /mL, & 1.0x10 <sup>7</sup> /mL	5.0-5.9	ACFP-50-4K	4x1 mL

Histogram of ACFP-100-3



Histogram of ACFP-50-3 spiked with 10 μm fluorescent particles



Histogram of ACBP-100-3

