

## Spherotech, Inc.

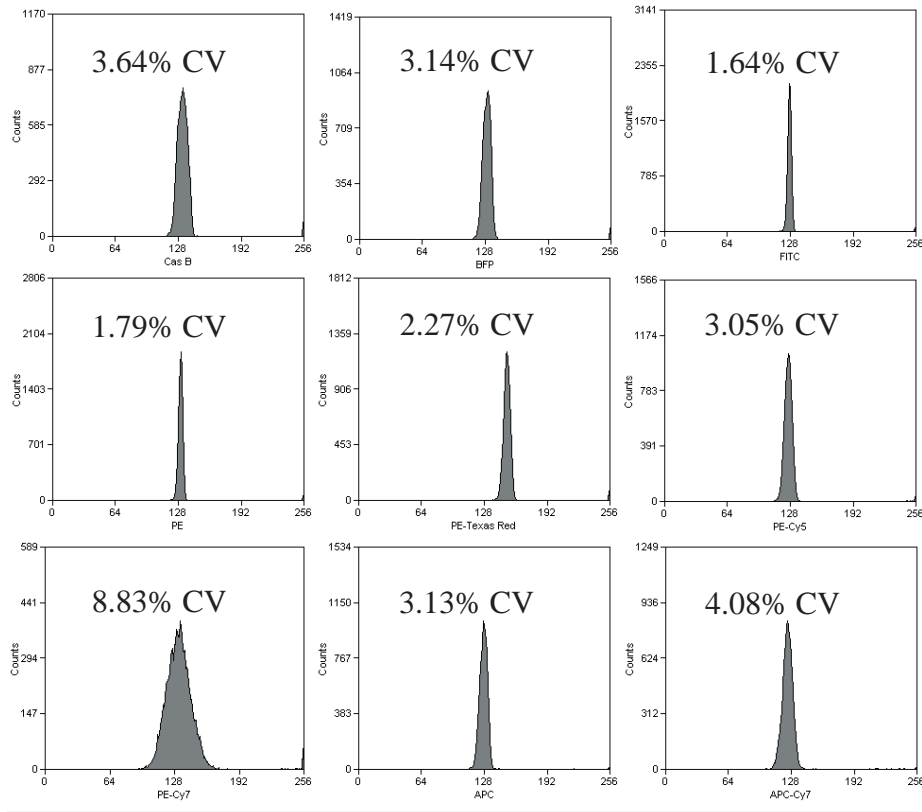
27845 Irma Lee Circle, Unit 101, Lake Forest, Illinois 60045

### SPHERO™ Rainbow Fluorescent Particles

The **Rainbow Fluorescent Particles** are similar to Rainbow Calibration Particles, as described before, except that these represent a uniform size particles with a single intensity. The Rainbow Fluorescent Particles are usually the brightest peak of the corresponding Rainbow Calibration Particles, as shown in Figure 7, with the exception of RFP-50-5, RFP-100-2 and RFP-30-5A. The RFP-30-5A has the fluorescence intensity similar to stained cells in all channels. Since the Rainbow Fluorescent Particles contain a single peak with very small fluorescence and size CV, they are very useful in the alignment of the optical system of the flow cytometer in all channels.

Particle Type and Surface	Size, $\mu\text{m}$	Catalog No.	Unit
Rainbow Fluorescent, $10^7/\text{mL}$ (Intensity similar to brightest peak in RCP-20-5)	1.8-2.2	RFP-20-5	5 mL
Rainbow Fluorescent, $10^7/\text{mL}$ (Intensity similar to brightest peak in RCP-30-5)	3.0-3.4	RFP-30-5	5 mL
Rainbow Fluorescent, $10^7/\text{mL}$ (Intensity similar to mid range FL1 fluorescence in RCP-30-5)	3.0-3.4	RFP-30-5A	5 mL
Rainbow Fluorescent, $10^7/\text{mL}$ (Intensity similar to brightest peak in RCP-35-5)	3.5-4.0	RFP-35-5	5 mL
Rainbow Fluorescent, $10^7/\text{mL}$	5.0-5.9	RFP-50-5	5 mL
Rainbow Fluorescent, $10^7/\text{mL}$ (Intensity similar to brightest peak in RCP-60-5, for FL1, FL2, and FL3)	6.0-6.4	RFP-60-5	5 mL
Rainbow Fluorescent, $10^7/\text{mL}$	8.1-12.0	RFP-100-5	5 mL

### Histograms of RFP-30-5



NOTE: %CV is dependent on the flow rate, concentration, and the instrument used to evaluate the Rainbow Fluorescent Particles.