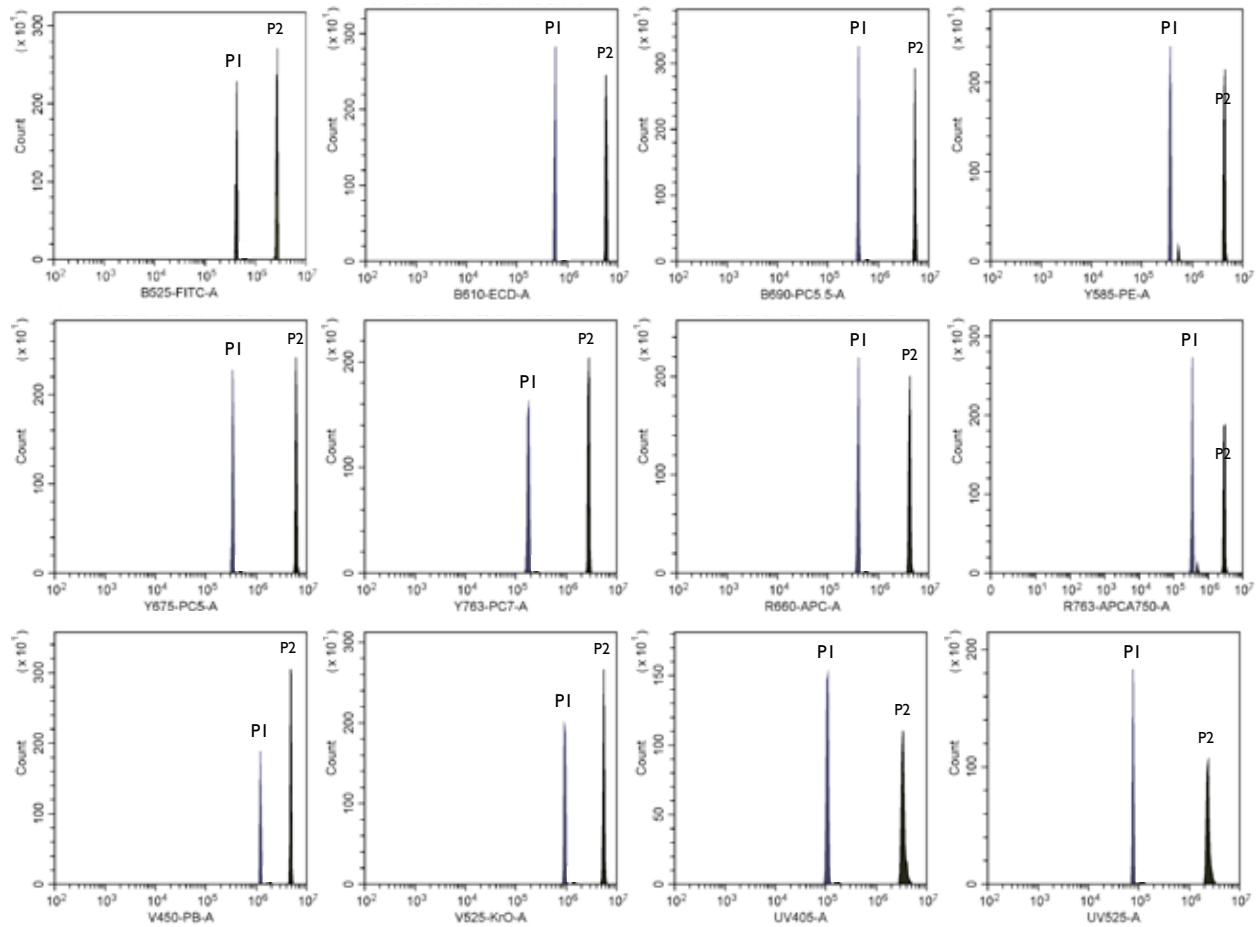


SPHERO™ Rainbow Fluorescent Particles

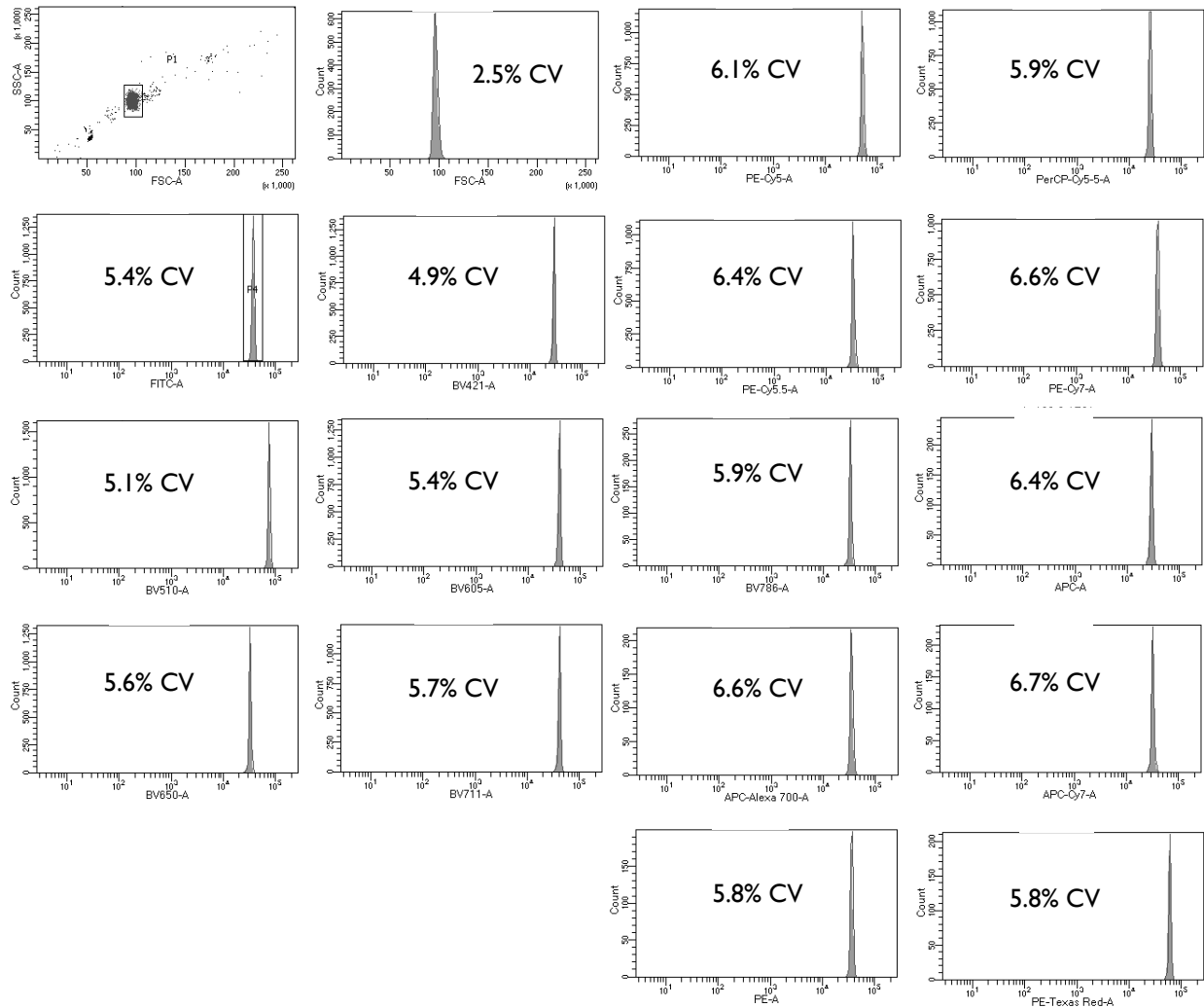
The Rainbow Fluorescent Particles are similar to Rainbow Calibration Particles except that these represent uniform size particles with a single intensity. The Rainbow Fluorescent Particles are usually the brightest peak of the corresponding Rainbow Calibration Particles with the exception of RFP-50-5, RFP-70-2, RFP-100-2 and RFP-30-5A. The RFP-30-5A has the fluorescence intensity similar to stained cells in all channels. Since these particles contain a single peak with very small fluorescence and size CV, they are very useful in the alignment of the optical system of the flow cytometer in all channels.

Particle Type and Surface	Size, μm	Catalog No.	Unit
Rainbow Fluorescent, $10^7/\text{mL}$ (Intensity similar to brightest peak in RCP-20-5)	1.8-2.2	RFP-20-5	5 mL
Rainbow Fluorescent, $10^7/\text{mL}$ (Intensity similar to brightest peak in RCP-30-5)	3.0-3.4	RFP-30-5	5 mL
Rainbow Fluorescent, $10^7/\text{mL}$ (Intensity similar to midrange FL1 fluorescence in RCP-30-5)	3.0-3.4	RFP-30-5A	5 mL
Rainbow Fluorescent, $10^7/\text{mL}$ (Intensity similar to brightest peak in RCP-35-5)	3.5-4.0	RFP-35-5	5 mL
Rainbow Fluorescent, $10^7/\text{mL}$	5.0-5.9	RFP-50-5	5 mL
Rainbow Fluorescent, $10^7/\text{mL}$ (Intensity similar to brightest peak in RCP-60-5)	6.0-6.4	RFP-60-5	5 mL
Rainbow Fluorescent, $10^7/\text{mL}$	6.5-8.0	RFP-70-5	5 mL
Rainbow Fluorescent, $10^7/\text{mL}$	8.1-12.0	RFP-100-2	2 mL

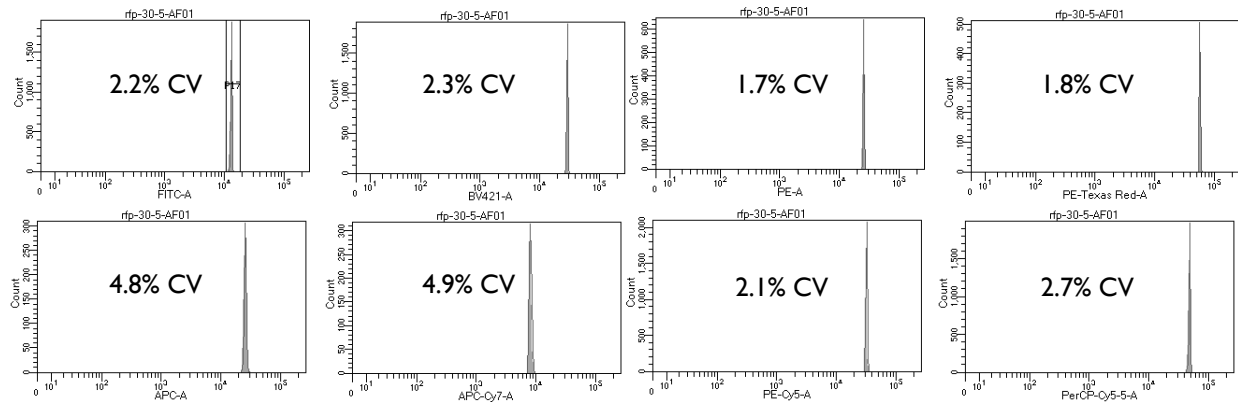
Flow Cytometry Particles - System Setup & Tracking



Dot Plot and histograms of RFP-30-5A (PI) & RFP-30-5 (P2) on a Beckman Coulter CytoFLEX LX



Dot Plot and histograms of RFP-100-2 on a BD Bioscience LSRFortessa™ X-20



Histograms of RFP-30-5 on a BD Bioscience LSRFortessa™ X-20