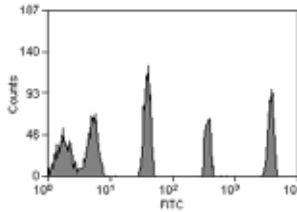


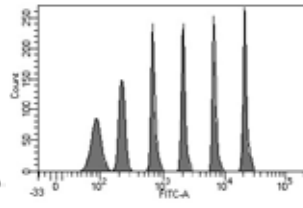
SPHERO™ Yellow Calibration Particles

- Designed for routine calibration of the Fluorescein channel
- Contains a set of Yellow Particles with different fluorescence intensities.
- Increased stability over FITC surface labeled particles.

Particle Type and Surface	Size, μm	Catalog No.	Unit
Fluorescent Calibration Particles, Yellow, $10^7/\text{mL}$, 6 peaks	7.0-7.9	FCP-7052-5	5 mL
Yellow Calibration, $10^7/\text{mL}$, 6 peaks	6.0-8.0	YCP-70-5	5 mL



Histograms of YCP-70-2

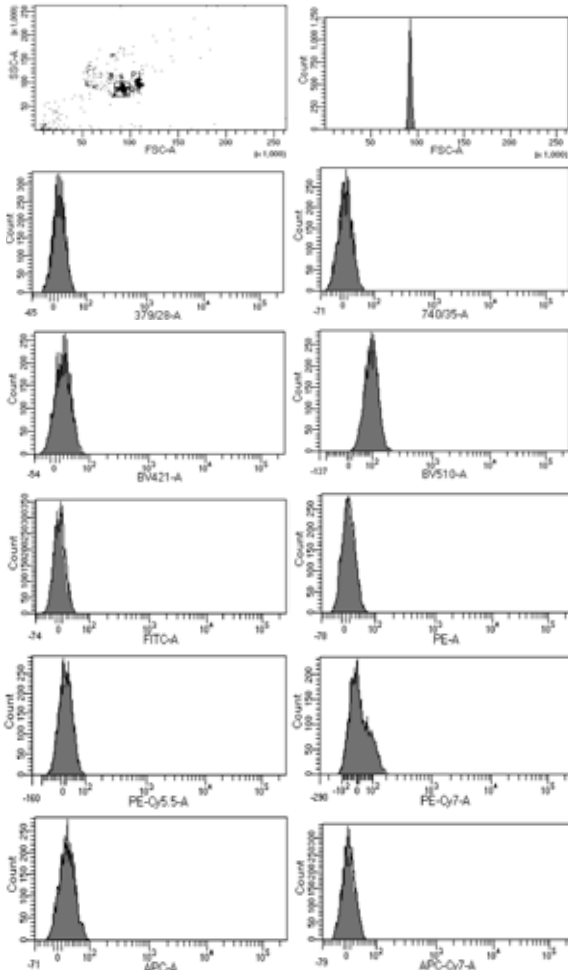


Histograms of FCP-7052-5

SPHERO™ Blank Calibration Particles

- Consists of the blank peak of the corresponding Rainbow Calibration Particles
- Used to set the threshold of the instrument in every channel
- Valuable in quality verification of FSC and SSC channels when several sizes are used at the same time.

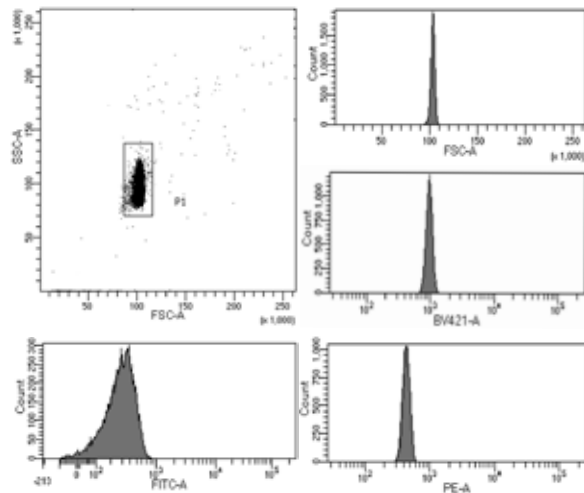
Particle Type and Surface	Size, μm	Catalog No.	Unit
Blank Calibration, $10^7/\text{mL}$	1.8-2.2	BCP-20-5	5 mL
Blank Calibration, $10^7/\text{mL}$	3.0-3.4	BCP-30-5	5 mL
Blank Calibration, $10^7/\text{mL}$	3.2 (+/-0.1)	BCP-32-5	5 mL
Blank Calibration, $10^7/\text{mL}$	3.5-4.0	BCP-35-5	5 mL
Blank Calibration, $10^7/\text{mL}$	5.0-5.9	BCP-50-5	5 mL
Blank Calibration, $10^7/\text{mL}$	6.0-6.4	BCP-60-5	5 mL
Blank Calibration, $5 \times 10^6/\text{mL}$	8.0-12.9	BCP-100-5	5 mL



Dot Plot and histograms of BCP-30-5

Below are the **Blank Calibration Particles** not associated with the Rainbow Calibration Particles.

Particle Type and Surface	Size, μm	Catalog No.	Unit
Blank Calibration, $10^7/\text{mL}$	1.0-1.4	BCP-10-5	5 mL
Blank Calibration, $10^7/\text{mL}$	6.5-8.0	BCP-70-5	5 mL
Blank Calibration, $5 \times 10^6/\text{mL}$	13.0-17.9	BCP-150-5	5 mL
Blank Calibration, $5 \times 10^5/\text{mL}$	18.0-24.9	BCP-200-5	5 mL
Blank Calibration, $5 \times 10^5/\text{mL}$	25.0-35.0	BCP-300-5	5 mL



Dot Plot and histograms of BCP-100-5