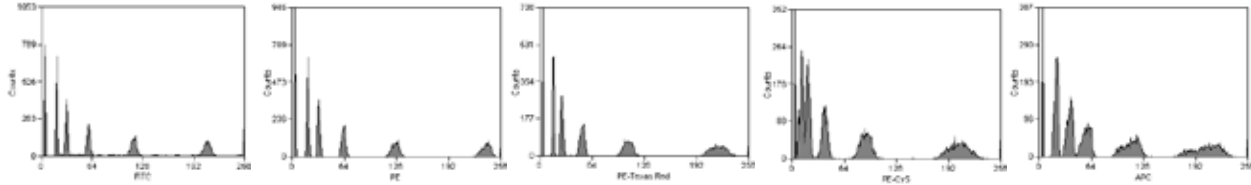


**SPHERO™ Rainbow Linear Calibration Particles**

- Designed to check the linearity of the PMT in the linear scale of flow cytometers
- Used to quantitate the DNA content of cells stained with either Hoechst dyes, DAPI, Ethidium Bromide, Propidium Iodide, YOYO or TOTO.

Particle Type and Surface	Size, $\mu\text{m}$	Catalog No.	Unit
Rainbow Linear Calibration, $10^7/\text{mL}$ , 6 peaks	3.0-3.4	RLP-30-5	5 mL

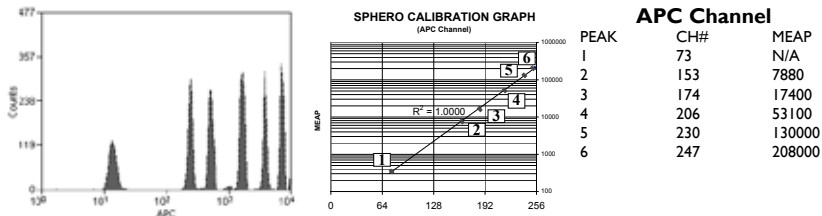


Histograms of RLP-30-2

**SPHERO™ Allophycocyanin Calibration Particles**

- Contain a mixture of fluorescent particles with different intensities in the Allophycocyanin channel
- Excited with either He-Ne laser at 632 nm or a diode laser at 635 nm
- Used to determine the linearity of the logarithmic amps and sensitivity of flow cytometers in Allophycocyanin channel.

Particle Type and Surface	Size, $\mu\text{m}$	Catalog No.	Unit
APC Calibration, $10^7/\text{mL}$ , 6 peaks	3.0-3.4	ACP-30-5K	2x5 mL

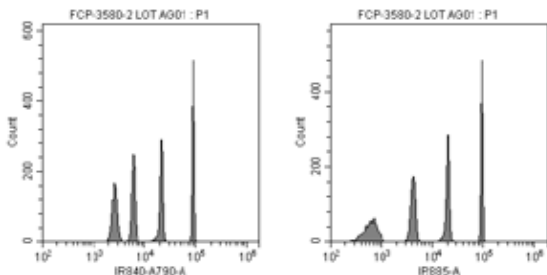


Histograms and PMT QC Template Graph of APC-30-5K

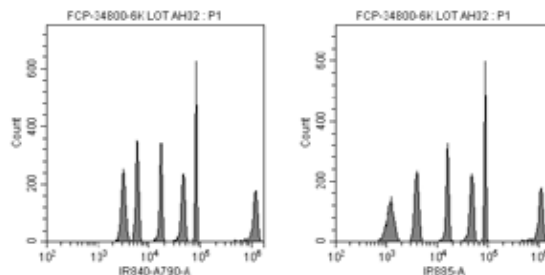
**SPHERO™ IR Calibration Particles**

- Contain a mixture of fluorescent particles with different intensities in IR channels
- Excited with 785-nm IR diode laser or other laser operating in the infrared
- Used to determine the linearity of the logarithmic amps and sensitivity in near-IR channels.

Particle Type and Surface	Size, $\mu\text{m}$	Catalog No.	Unit
IR Calibration, $10^7/\text{mL}$ , 800nm EM, 4 peaks	3.5 (+/- 0.2)	FCP-3580-2	2 mL
Fluorescent Calibration, $10^7/\text{mL}$ , 800nm EM, 6 peaks	3.5 (+/- 0.2)	FCP-34800-6K	6x1 mL



Histograms of FCP-3580-2



Histograms of FCP-34800-6K

Flow Cytometry Particles -  
Linearity and Sensitivity