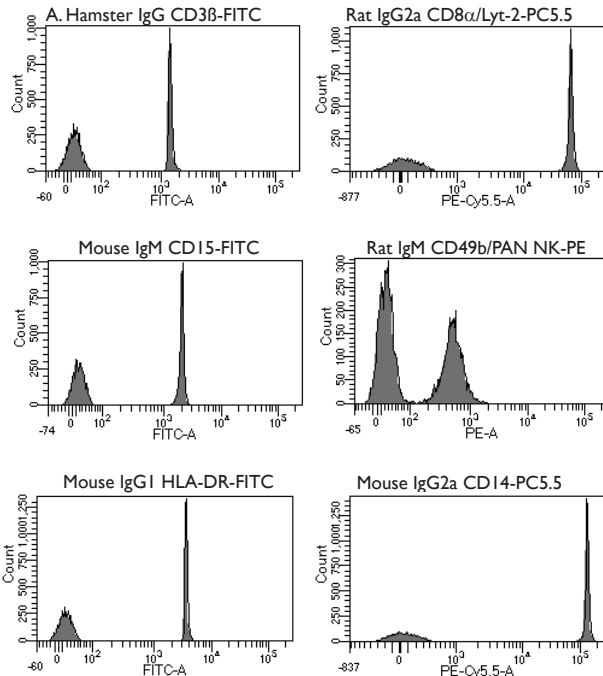


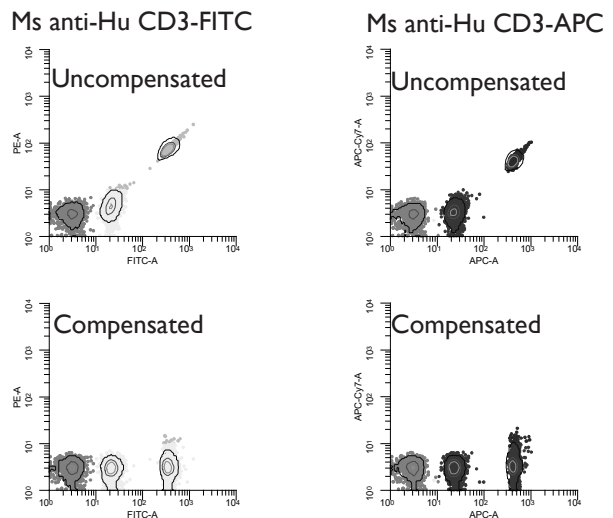
SPHERO™ COMPtrol Antibody Capture Beads

- Binds to antibodies of mouse, rat, and hamster origin, and are immunoglobulin light chain independent
- Provides a method for the quality control of fluorochrome-conjugated antibodies prior to cell staining
- Aids in setting proper compensation to reduce cross-talk between flow cytometer channels
- Compatible with all fluorochromes excited from the UV to the near IR.

Particle Type and Surface	Size, μm	Catalog No.	Unit
COMPtrol Kit, Goat anti-Mouse Ig (H&L) Coated Particles, 2 populations (Negative & High), $1 \times 10^7/\text{mL}$	0.7-0.9	CM1gP-08-2K	2x5mL
COMPtrol Kit, Goat anti-Mouse Ig (H&L) Coated Particles, 2 populations (Negative & High), $1 \times 10^7/\text{mL}$	3.0-3.4	CM1gP-30-2K	2x5mL
COMPtrol Kit, Goat anti-Mouse Ig (H&L) Coated Particles, 2 premixed populations (Negative & High), $1 \times 10^7/\text{mL}$	3.0-3.4	CM1gP-30-5	5mL
COMPtrol Kit, Goat anti-Mouse Ig (H&L) Coated Particles, 3 populations (Negative, Low, & High), $2.5 \times 10^6/\text{mL}$	5.0-5.9	CM1gP-50-3K	3x5mL
COMPtrol Kit, Goat anti-Mouse Ig (H&L) Coated Particles, 3 populations (Negative, Low, & High), $2.5 \times 10^6/\text{mL}$	7.0-7.9	CM1gP-70-3K	3x5mL



Histograms of the CM1gP-30-2K exposed to to mouse, rat & hamster antibodies



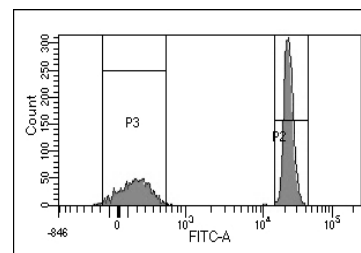
Dot plots of the CM1gP-50-3K exposed to mouse monoclonal fluorescent conjugate

Flow Cytometry
Compensation Particle

SPHERO™ COMPtrol Amine-Reactive Dye Compensation Kit

Suitable for labeling with LIVE/DEAD® stains or other amine-reactive dyes to generate compensation standards for flow cytometric analysis

Particle Type and Surface	Size, μm	Catalog No.	Unit
COMPtrol Amine-Reactive Dye Compensation Kit, 2 populations (Negative & High), $1 \times 10^7/\text{mL}$	7.0-7.9	CARCP-70-2K	2x5mL



Histogram of the CARCP-70-2K stained with BioLegend Zombie Green™ amine-reactive dye