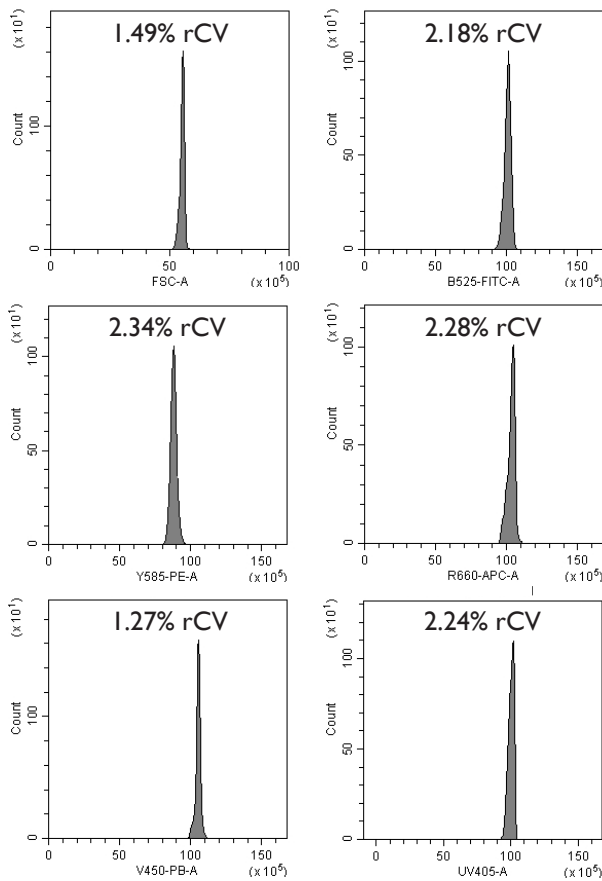


SPHERO™ Rainbow Alignment Particles

- Consists of a prediluted, single peak for optical alignment of any flow cytometer in any channel
- Contains a single peak with very low fluorescence and size CV
- Fluorescent in UV, FITC, PE, PE-TR, PE-Cy5, PE-Cy7, APC, and APC-Cy7 channels
- Measures the coefficients of variation (CVs), peak channels, and histogram distribution of flow cytometers.

Particle Type and Surface	Size, μm	Catalog No.	Unit
Rainbow Fluorescent Alignment Particles, $1.2 \times 10^6/\text{mL}$	3.5-3.9	RAP-38-5	5 mL

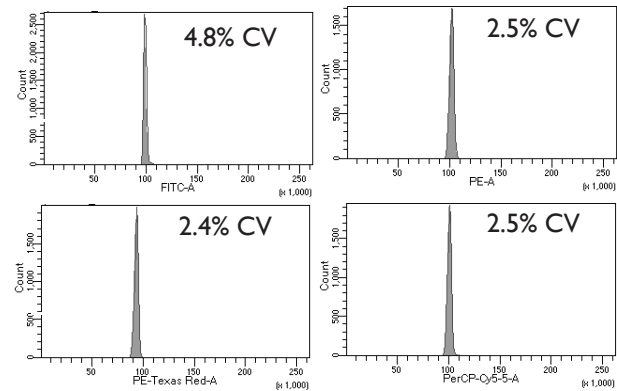


Dot plot and histograms of RAP-38-5 on a Beckman Coulter CytoFLEX LX

SPHERO™ Fluorescent Alignment Particles

- Consists of a single peak for optical alignment of any flow cytometer
- Contains a single peak with very low fluorescence and size CV
- Fluorescent in FITC, PE, PE-TR, and PE-Cy5 channels
- Measures the coefficients of variation (CVs), peak channels, and histogram distribution of flow cytometers.

Particle Type and Surface	Size, μm	Catalog No.	Unit
Fluorescent Alignment Particles, $10^8/\text{mL}$	3.0-3.4	FAP-3056-5	5 mL



Dot Plot and histograms of FAP-3056-5 on a BD Bioscience LSRFortessa™ X-20

SPHERO™ Rainbow Calibration and Rainbow QC Kits

- Designed to simplify the routine calibration of flow cytometers.

SPHERO™ Rainbow QC Kit (Cat. No. RCK-3K)

Consists of one vial each of the following particles:

- RCP-30-5A-1 (Peak 1), 3.0-3.4 μm , $10^7/\text{mL}$, 5mL
- RCP-30-5A-4 (Peak 4), 3.0-3.4 μm , $10^7/\text{mL}$, 5mL
- RCP-30-5A-8 (Peak 8), 3.0-3.4 μm , $10^7/\text{mL}$, 5mL

SPHERO™ Rainbow Calibration Kit (Cat. No. RQC-4K)

Consists of one vial each of the following particles:

- BCP-60-2, 6.0-6.4 μm , $10^7/\text{mL}$, 2mL
- RFP-60-2, 6.0-6.4 μm , $10^7/\text{mL}$, 2mL
- RCP-30-2L (Peaks 1-4), 3.0-3.4 μm , $10^7/\text{mL}$, 2mL
- RCP-30-2H (Peaks 5-8), 3.0-3.4 μm , $10^7/\text{mL}$, 2mL

Particle Type and Surface	Catalog No.	Unit
Rainbow Calibration Kit	RCK-3K	1 Kit
Rainbow QC Kit	RQC-4K	1 Kit