



27845 Irma Lee Circle  
Lake Forest, Illinois 60045-5100

Tel : (847) 680 8922  
Fax : (847) 680 8927  
<http://www.spherotech.com>

## TECHNICAL DATA

**PRODUCT:** SPHERO™ Rainbow Calibration Particles, 8 Peaks, 3.0-3.4 µm.

**CATALOG NO.:** RCP-30-5A

**LOT NO.:** EAK01

**SIZE:** 5 mL

**CONCENTRATION:** ~10 X 10<sup>6</sup> particles/mL

**STORAGE BUFFER:** Deionized water with 0.02% Sodium Azide and 0.01% NP40

**STORAGE TEMP.:** Stable at room temperature. Store between 2° and 8° C after first use.

**CAUTION:** Do not freeze. Protect from light.

**DESCRIPTION:** This product contains a mixture of 3.4 µm Rainbow Particles in **eight** different fluorescent intensities. Every Rainbow particle contains a mixture of fluorophores that enable the Rainbow particles to be excited at any wavelength from 365 to 650 nm.

**USE:** Routine calibration of flow cytometers. Dilution of 3-5 drops to 1 mL will provide adequate number of particles for flow cytometry.

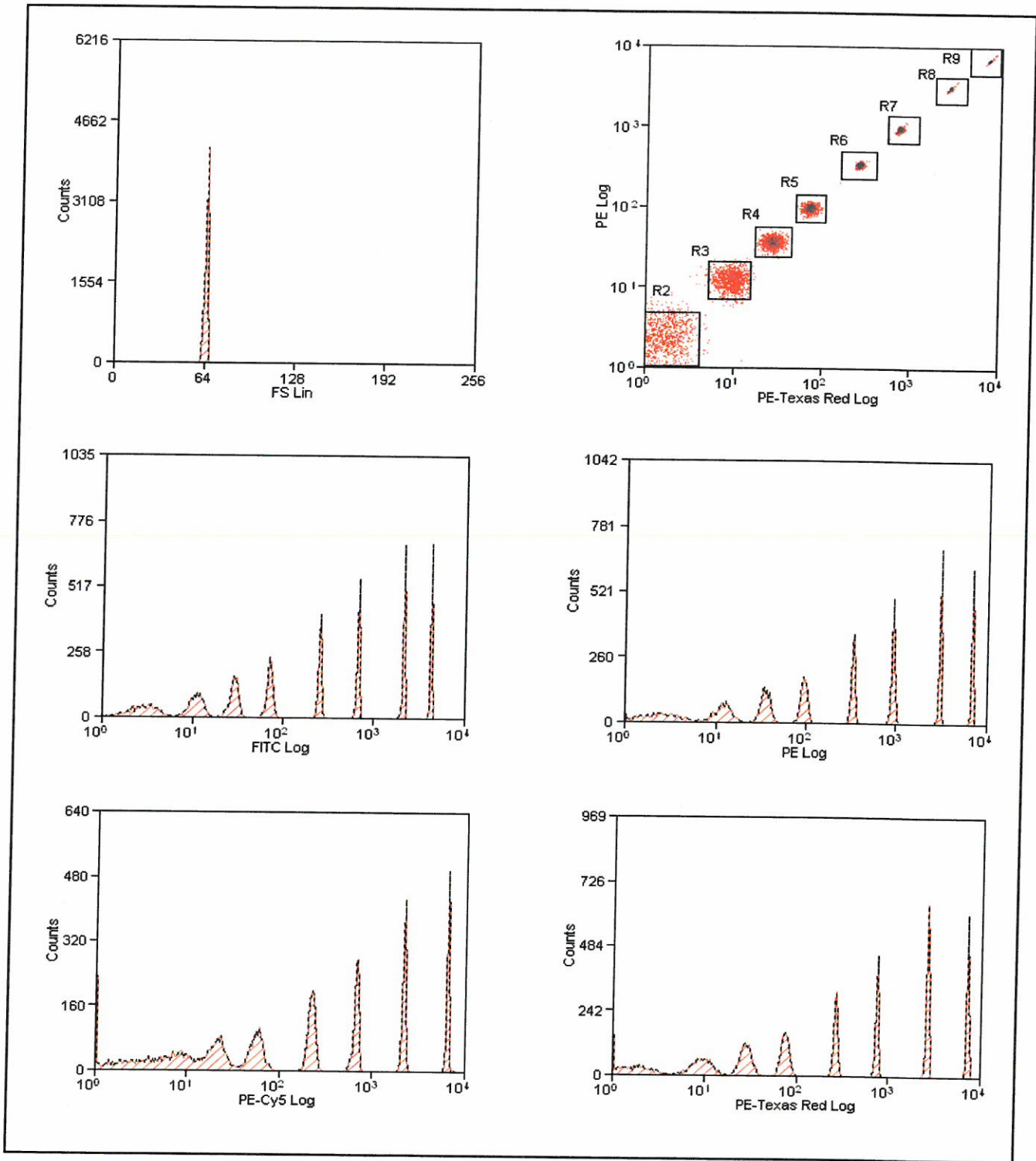
**NOTE:** Shake vigorously or vortex briefly before use. Inclusion of a small amount of detergent in the diluent will help to increase the number of singles. Diluted Particles can be stored in the refrigerator for future use. *Expires one year after opening. Please record opening date on bottle.*

### ***Fluorescence Intensity Target Values for RCP-30-5A-7 (Peak 7)***

	Lower MFI (-15%)	Rainbow 7-peak (DiVa)	Upper MFI (+15%)
<b>Pacific Blue</b>	100.452	118.178	135.905
<b>Pacific Orange</b>	93.871	110.436	127.002
<b>FTC</b>	28.752	33.826	38.900
<b>PE</b>	32.381	38.095	43.809
<b>PerCP</b>	66.846	78.642	90.438
<b>PC7</b>	8.316	9.783	11.250
<b>APC</b>	158.639	186.634	214.629
<b>APC-H7</b>	64.194	75.522	86.850

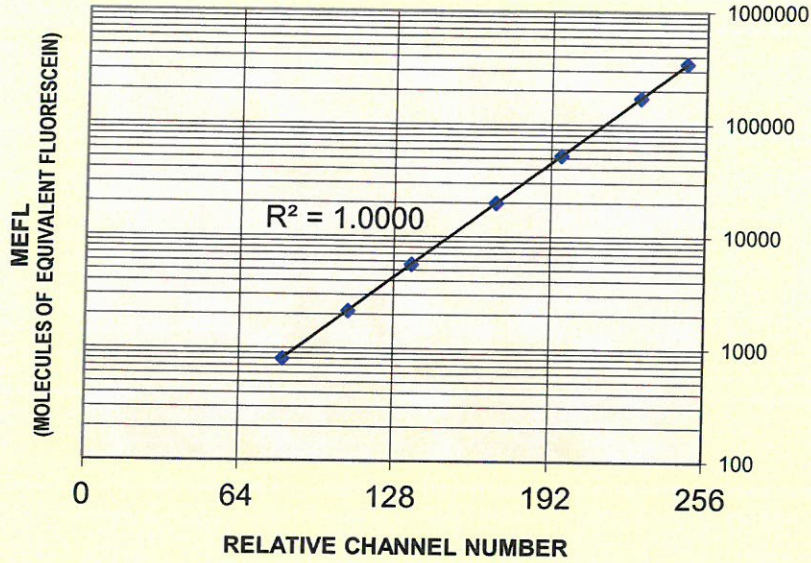
**FOR RESEARCH APPLICATIONS ONLY. NOT FOR DIAGNOSTIC USE.**

# HISTOGRAMS



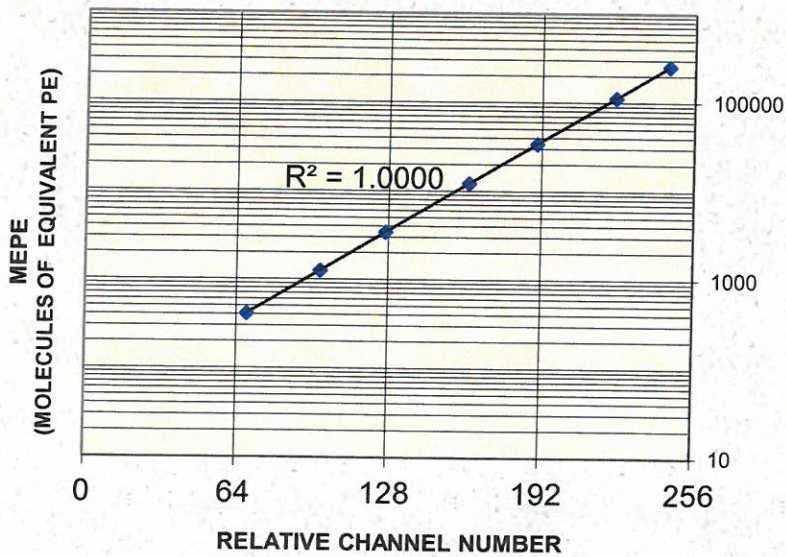
SPHERO™ Rainbow Calibration Particles, 8 Peaks  
CATALOG NO.: RCP-30-5A      LOT NO.: EAK01

**SPHERO CALIBRATION GRAPH**  
**MEFL OF RCP-30-5A (8 PEAKS)**



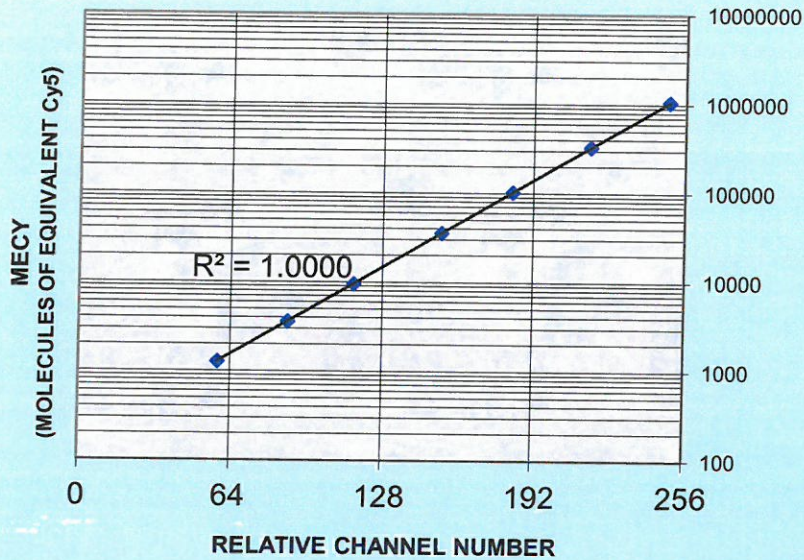
PEAK #	CH #	MEFL
1		
2	82	806
3	109	2159
4	135	5640
5	170	19900
6	196	52630
7	229	172155
8	248	345870

**SPHERO CALIBRATION GRAPH**  
**MEPE OF RCP-30-5A (8 PEAKS)**



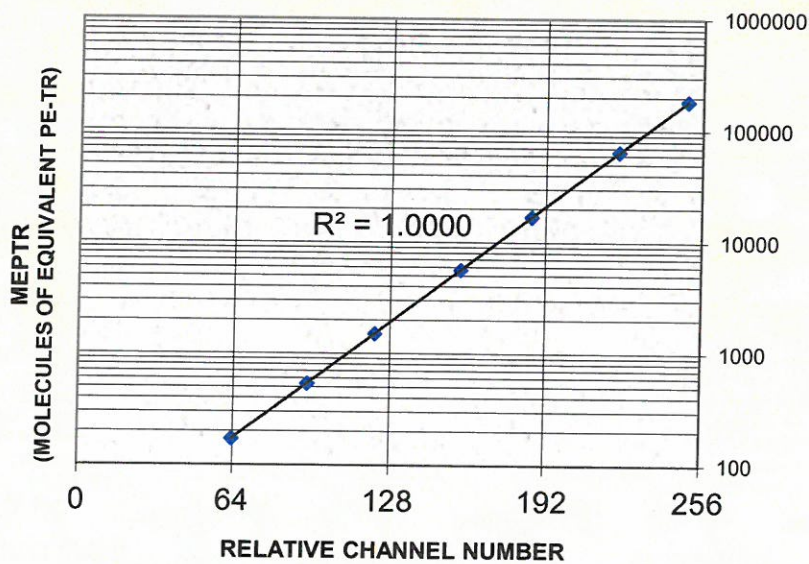
PEAK #	CH #	MEPE
1		
2	68	409
3	99	1250
4	127	3428
5	162	12229
6	190	34294
7	223	113118
8	245	256134

**SPHERO CALIBRATION GRAPH**  
MECY OF RCP-30-5A (8 PEAKS)



PEAK #	CH #	MECY
1		
2	59	1276
3	88	3603
4	116	9520
5	153	35518
6	183	102755
7	216	328185
8	249	1052496

**SPHERO CALIBRATION GRAPH**  
MEPTR OF RCP-30-5A (8 PEAKS)



PEAK #	CH #	MEPTR
1		
2	64	171
3	94	538
4	122	1514
5	157	5659
6	186	16972
7	222	64615
8	250	183897